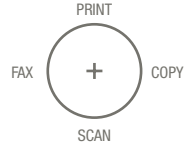




KONICA MINOLTA

A TOTAL SOLUTION FOR ALL-IN-ONE PRODUCTIVITY.

Want to do more – and do it faster and more cost-efficiently? You're ready for the bizhub 600. Its high-volume 60 ppm output and robust monthly duty cycle of 300,000 pages can increase your productivity in high-speed, high-volume document traffic. The bizhub 600 helps busy offices, data centers and corporate workgroups keep pace with rising demands through a full range of printing, copying, and scanning capabilities powered by the advanced Emperon™ Print System. A high-speed Super G3 fax option adds all-in-one multifunctional efficiency – and you'll have enhanced security protection, production-quality auto finishing options and powerful software for online status monitoring and networked control of documents and devices.



DO BUSINESS BETTER

60 PPM

CONNECT

COMMUNICATE

CONTROL

bizhub 600

- ▶ POWERFUL 60 PPM B&W PRINT/COPY OUTPUT
- ▶ HIGH-VOLUME 300,000 PAGE MONTHLY DUTY CYCLE
- ▶ BIZHUB OP FOR TOTAL MULTIFUNCTIONAL PRODUCTIVITY
- ▶ SIMITRI® POLYMERIZED TONER FOR ULTRA-FINE IMAGING
- ▶ FAST, FLEXIBLE SCANNING TO EMAIL, FTP, SMB (DESKTOP)
- ▶ SCAN-TO-USER BOX WITH OPTIONAL HARD DISK DRIVE
- ▶ ENHANCED SECURITY FUNCTIONS TO PROTECT YOUR DATA
- ▶ 7,600-SHEET MAXIMUM PAPER CAPACITY (WITH OPTIONS)
- ▶ AUTO FINISHING OPTIONS, INCLUDING BOOKLET-MAKING
- ▶ SUPER G3 FAX OPTION (SINGLE OR MULTILINE)

bizhub 600

- _ B&W
- _ PRINTER
- _ COPIER
- _ SCANNER
- _ FAX



The essentials of imaging

KONICA MINOLTA bizhub 600

High-speed, high-volume output. With 60-ppm print/copy output for high-volume document traffic, you'll have plenty of power for in-house document production at high speed and low cost.

Fast first-copy output. With first-copy output time of 3.5 seconds or less, the bizhub 600 can eliminate those long lines at the copier.

IC-202 Image Controller. Driven by the Emperon™ Print System, the IC-202 Image Controller option provides point-and-click printing control through a simple driver interface – with PCL5e/PCL6 and PostScript 3 emulation.

Faster scanning to more destinations. Bring information into your workflow faster with Scan-to-Email with LDAP address look-up, Scan-to-FTP, Scan-to-SMB (Desktop), even Scan-to-HDD (User Box) on an optional built-in Hard Disk Drive.

User Box functionality. Store, share and access documents more easily from individual User Boxes that offer industry-leading functionality (Save/Print/Route/Move/Copy) – saving you the trouble of re-scanning frequently used documents and saving files to PC.

Enhanced security protection. To protect scanned and stored information, the bizhub 600 provides HDD Encryption, User Authentication, Account Track and special security enhancements to meet ISO 15408 Certification requirements.

Electronic Document Handler. Loads up to 100 sheets, offers job building for larger sets of originals, accepts documents up to 11" x 17" and scans 1-sided or 2-sided originals.

Super G3 Fax option. A high-speed fax option with single or multiline capability delivers all-in-one productivity to handle all your document traffic, so you can eliminate redundant or underutilized equipment.

Networking power with PageScope™ software. Speed workflow throughout your organization with today's most comprehensive software suite, including PageScope Web Connection to give each bizhub device its own "web site" for accessing status and managing settings via standard web browsers – and PageScope Net Care, enabling IT administrators to manage an entire fleet of bizhub and MIB-compliant MFP's from a single point.

PRODUCTION-QUALITY FINISHING OPTIONS.
PRODUCE MORE DOCUMENTS IN-HOUSE AND ON-DEMAND, WITH MODULAR OPTIONS FOR SORTING AND GROUPING, MULTI-POSITION STAPLING, 2/3-HOLE PUNCHING, HALF-FOLD, TRI-FOLD, Z-FOLD AND SADDLE-STITCHED BOOKLET-MAKING.

FINISHING OPTIONS

- ▶ SORTING/GROUPING
- ▶ STAPLING (8-POSITION)
- ▶ 2/3-HOLE PUNCHING
- ▶ FOLDING
- ▶ BOOKLET MAKING



ROBUST DESIGN FOR GREATER PRODUCTIVITY.
RUGGED DESIGN AND ROBUST 300,000-PAGE MONTHLY DUTY CYCLE MAKE THE BIZHUB 600 IDEAL FOR IN-HOUSE PRINTING OF REPORTS AND PRESENTATIONS, HUMAN RESOURCE DOCUMENTS, LEGAL AND HEALTHCARE REPORTS, FINANCIAL DATA, TRAINING MATERIALS AND MORE.

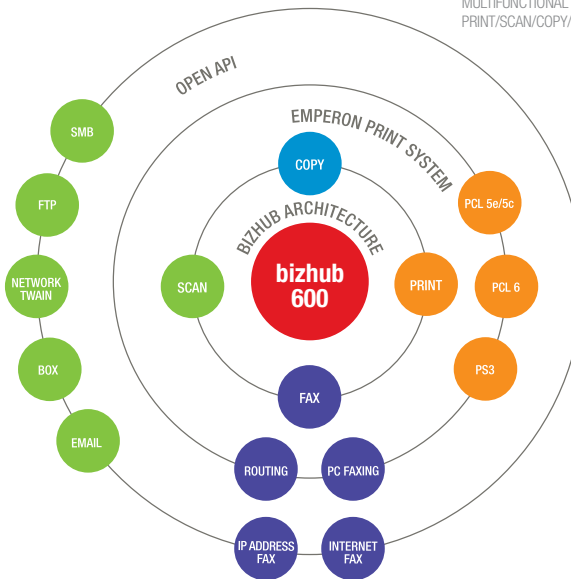
7,600-SHEET MAXIMUM PAPER CAPACITY. WITH OPTIONS, THE BIZHUB 600 LETS YOU BOOST PAPER CAPACITY TO WORK LONGER WITHOUT RE-LOADING PAPER – AND YOU CAN LOAD UP TO 110 LB. (200 GSM) STOCK IN ALL PAPER TRAYS AND OUTPUT FULL-BLEED 11" X 17" DOCUMENTS ON 12" X 18" PAPER TO PRESERVE CROP MARKS AND BORDERS.



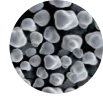
60 PPM



THE POWER OF BIZHUB OP. INTEGRATED DESIGN COMBINES MULTIPLE OPERATIONS, ALLOWING THE BIZHUB 600 TO IMPROVE MULTIFUNCTIONAL EFFICIENCY AND SIMPLIFY PRINT/SCAN/COPY/FAX CONTROL.



SIMITRI®



PULVERIZED



SIMITRI® POLYMERIZED TONER. EXCLUSIVE KONICA MINOLTA TONER FORMULATION USES ULTRA-FINE PARTICLES OF SMALLER SIZE AND MORE CONSISTENT SHAPE TO SHARPEN EDGE DETAIL, MAKE TEXT MORE LEGIBLE AND INCREASE HALFTONE DEFINITION.

bizhub



© 2007 KONICA MINOLTA BUSINESS SOLUTIONS U.S.A., INC. All rights reserved. Reproduction in whole or in part without written permission is prohibited. Konica Minolta and The essentials of imaging are trademarks of KONICA MINOLTA HOLDINGS, INC. bizhub, Emperon, and PageScope are trademarks of KONICA MINOLTA BUSINESS SOLUTIONS, INC. Simitri is a registered trademark of KONICA MINOLTA BUSINESS SOLUTIONS. All other brands and product names are registered trademarks or trademarks of their respective owners.

Design & specifications are subject to change without notice.

Some functions may require options, which may or may not be available at time of launch.



KONICA MINOLTA

KONICA MINOLTA BUSINESS SOLUTIONS U.S.A., INC.
100 Williams Drive
Ramsey, NJ 07446

www.kmbs.konicaminolta.us
www.kmbs.konicaminolta.us/solutions